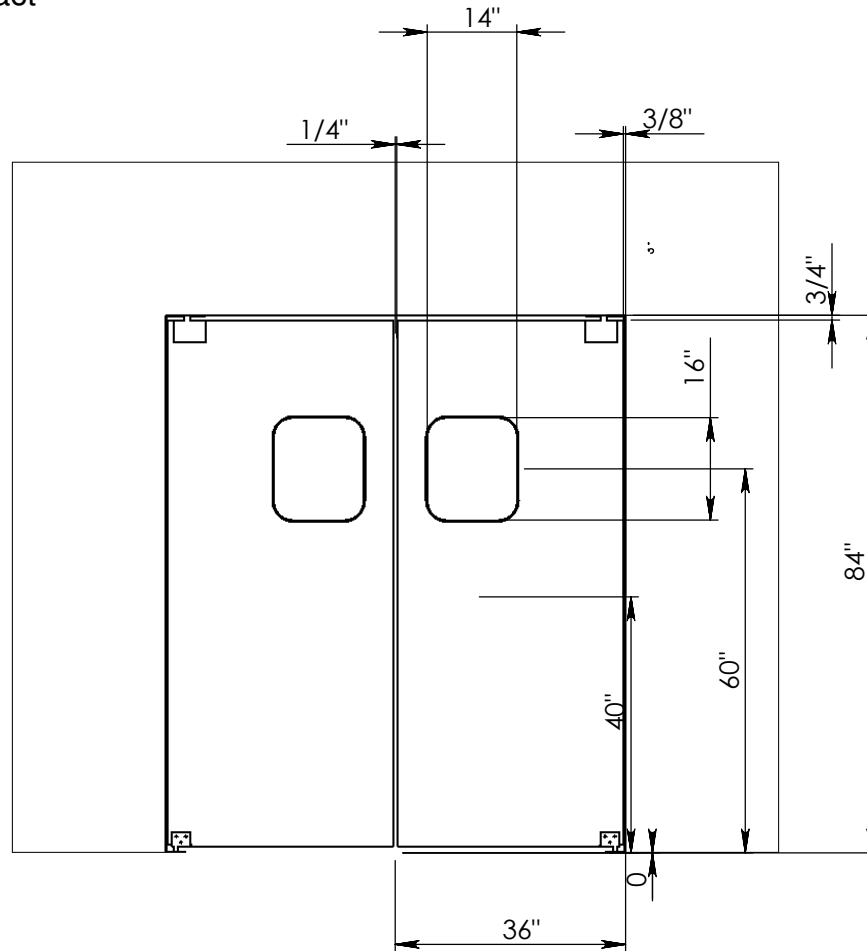


SPECIFICATION

Door Body: Polymer cell core with .5" solid ABS frame, 0.75" total door thickness
 Finish: 0.100" thick high impact thermoplastic exterior

**P-11 PLUS -
RHS**



| |
|---------------------------------------------------------------------------|
| QUANTITY: 1 |
| FINISHED OPENING SIZE: 72" W X 84" H REGULAR |
| DOOR COLOR: PLEASE ADVISE |
| WINDOW: 14" X 16" SINGLE PANE BLACK RUBBER MOLDING CLEAR ACRYLIC |
| HINGE: EZ SWING |
| JAMB GUARD: NONE MATERIAL: GASKETS: NO |
| |
| |
| |
| |
| |
| |
| |
| |
| |
| |
| |

Approved By:

Signature:

TAG:



Ph: 800-828-3655
 Fx: 800-828-3577
www.eliasoncorp.com

PROPRIETARY AND CONFIDENTIAL
 THE INFORMATION CONTAINED IN THIS DRAWING IS THE SOLE PROPERTY OF ELIASON CORP. ANY REPRODUCTION IN PART OR AS A WHOLE WITHOUT THE WRITTEN PERMISSION OF ELIASON CORP. IS PROHIBITED.

SOLD TO:
 PROJECT:
 ORDER #:

PO #:

